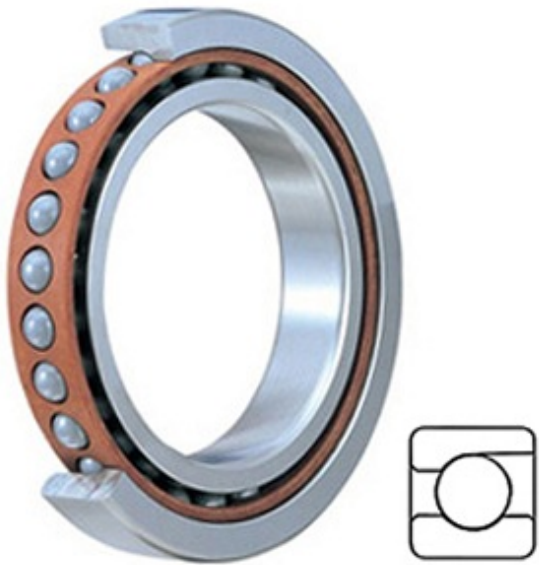




KORTON INDUSTRIAL LIMITED



1.969 Inch | 50 Millimeter x 2.835 Inch | 72
 Millimeter x 0.472 Inch | 12 Millimeter SKF
 B/SEB507CE1UM Precision Ball Bearings

Bearing No. B/SEB507CE1UM

B/SEB507CE1UM Bearing 2D drawings and 3D CAD models

Category	Precision Ball Bearings
Inventory	0.0
Manufacturer Name	SKF
Minimum Buy Quantity	N/A
Weight	0
Product Group	B04270
Enclosure	Open
Precision Class	ABEC 7 ISO P4
Material - Ball	Steel
Number of Bearings	1 (Single)
Contact Angle	15 Degree
Preload	Medium
Raceway Style	1 Rib Outer Ring
Cage Material	Phenolic
Rolling Element	Ball Bearing
Mounting Arrangement	Universal
Flush Ground	Yes
Inch - Metric	Metric
Other Features	Single Row Angular Contact
Long Description	50MM Bore; 72MM Outside Diameter; 12MM Width; Open Enclosure; ABEC 7 ISO P4 Precision; Steel Ball Material; 1 (Single) Bearing; 15 Degree Contact Angle; Phenolic



KORTON INDUSTRIAL LIMITED

	Cage Material; 1 Rib Outer Ring Race
Category	Precision Ball Bearings
UNSPSC	31171531
Harmonized Tariff Code	8482.10.50.28
Noun	Bearing
Keyword String	Ball Angular Contact
Manufacturer URL	http://www.skf.com
B	0.472 Inch 12 Millimeter
D	2.835 Inch 72 Millimeter
d	1.969 Inch 50 Millimeter